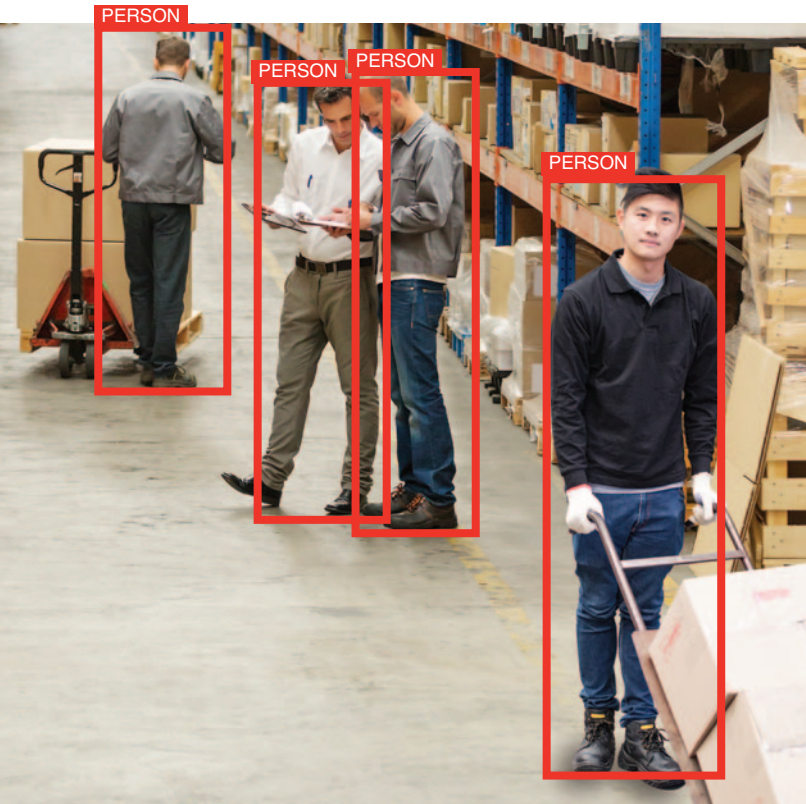




OmniPro™ LITE

People Detection & Alerting
Safety Vision Technology



- OmniPro Lite is a camera-based recognition system that helps detect people within the line of travel and alerts equipment operator of their presence.
- Workers do not wear a signalling device.
- Ultra low-light 2.5 Megapixel camera with up to 130° Field of Vision.
- For additional safety coverage, multiple OmniPro Lite systems can be wirelessly linked together.
- Rugged design for longer life in high-vibration, dirty industrial environments.
- Compact design with all connection points on one end.



www.matrixteam.com 

Phone: 812.490.1525 • Fax: 812.490.1582 • 3299 Tower Drive • Newburgh, Indiana 47630 • email: sales@matrixteam.com



OmniPro™ LITE

People Detection & Alerting
Safety Vision Technology

OmniPro Lite Features

- 3 output relays 5A, switching voltage 277VAC, 30VDC Max
- 2 Optoisolated dourcing inputs 5-30VDC
- 2.4- 802.11 dual band Wireless Lan
- 2.4-802.15.24 Zigbee for single or mesh send and receive
- Bluetooth 4.2/ BLE
- ADXL343 3-axis accelerometer
- Ethernet port 10/100
- HDMI port
- 4 USB 2.0 ports
- Power barrel connector jack 2.10mm ID, 5.50mm OD
- Plug type socket for 2 pin power port
- Plug type socket for 8 pin output and inputs
- CSI camera port
- DSI display port
- Ultra-low light 2.5 megapixel camera
- External power LED indication
- Thermal cooling fan
- 2-piece rugged bent aluminum enclosure
- Tempered glass lens cover
- Mounting brackets
- For indoor or outdoor usage

OmniPro Lite Specifications

Voltage (input)	9-36VDC
Current (typical)	500mA
Current (peak)	2.5A
CPU	Arm Cortex-A53 64-bit SoC
CPU Speed	1.4 GHz
RAM	1 GB
Dimensions (H x W x D)	6.0in x 3.80in x 3.56in 152.4mm x 96.52mm x 90.42mm
Mounting pattern (H x W)	3.0in x 3.80in 76.2mm x 96.5mm
Weight (approx.)	3.00lbs [1.36kg]



Contains FCC Certification
MCQ-S2CTH



www.matrixteam.com 

Phone: 812.490.1525 • Fax: 812.490.1582 • 3299 Tower Drive • Newburgh, Indiana 47630 • email: sales@matrixteam.com